

The Original Florida Tourism Task Force

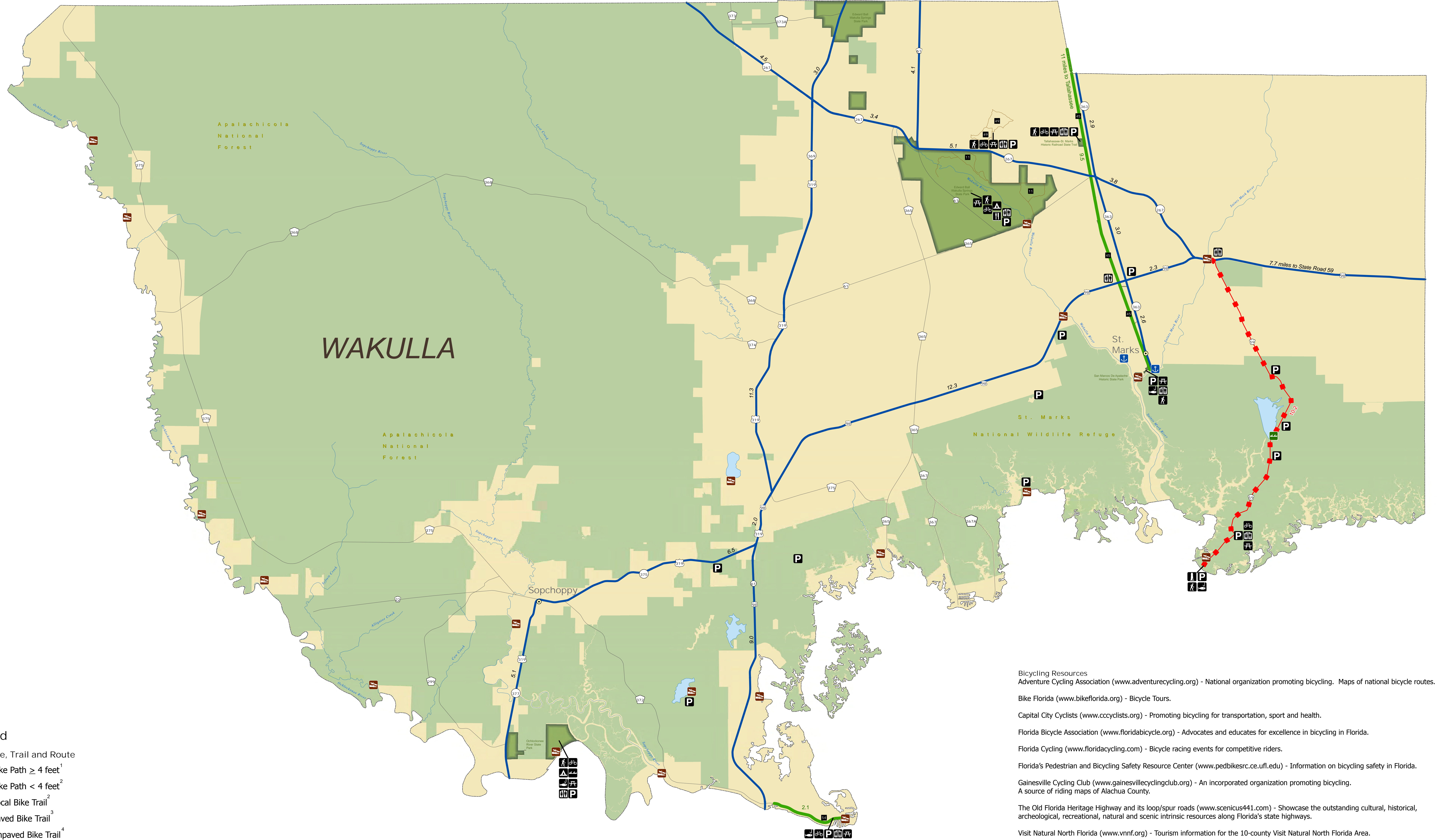
Bike Paths and Trails

	Hiking/Nature Trail	Bicycling	Camping	Canoeing	Fishing	Picnicking	Concession & Restaurant	Restroom	Parking
Edward Ball Wakulla Springs State Park*	•	•	•	•	•	•	•	•	•
Ochlocknee River State Park*	•	•	•	•	•	•	•	•	•
San Marcos de Apalache Historic State Park	•	•	•	•	•	•	•	•	•
Tallahassee-St. Marks Historic Railroad State Trail*	•	•	•	•	•	•	•	•	•
Wakulla State Forest*	•	•	•	•	•	•	•	•	•
Ochlocknee Bay Trail	•	•	•	•	•	•	•	•	•
St. Marks National Wildlife Refuge*	•	•	•	•	•	•	•	•	•

Edward Ball Wakulla Springs State Park*
 Ochlocknee River State Park*
 San Marcos de Apalache Historic State Park
 Tallahassee-St. Marks Historic Railroad State Trail*
 Wakulla State Forest*
 Ochlocknee Bay Trail
 St. Marks National Wildlife Refuge*

*Trail map available

- Florida Greenways and Trails
 11 Edward Ball Wakulla Springs State Park Trail
 45 Tallahassee Saint Marks Historic Railroad State Trail
 49 Wakulla State Forest Trail
 54 Ochlocknee Bay Trail



Legend

Bike Lane, Trail and Route

- Bike Path \geq 4 feet¹
- Bike Path $<$ 4 feet²
- Local Bike Trail²
- Paved Bike Trail³
- Unpaved Bike Trail⁴

Other Map Features

- County Boundary
- City or Town
- Stand Alone Ramp⁵
- Boat Ramp within Marina⁵
- Hand Launch Only⁵
- State Park
- Conservation Land
- Waterbody
- River or Creek
- Interstate
- U.S. Highway
- State Road
- County Road

¹ These roads may not have dedicated bicycle lanes or share the road signs. May have high traffic speeds and high traffic volumes requiring caution.
² These roads may not have dedicated bicycle lanes or share the road signs. Additionally, these roads may have no paved shoulder and may require bicyclists to use the same travel lane used by motor vehicles. Used by experienced bicyclists due to low traffic volume, scenic beauty or connectivity between locations. Requires caution.
³ A paved bike trail is an off-street bicycle facility. Normally at least 8 feet wide and either concrete or asphalt.
⁴ An unpaved bike trail is an off-street bicycle facility that is unsuitable for high performance road bicycles.
⁵ Most boat ramps, marinas and canoe launches feature parking.

Distances between intersections are displayed in miles.

Sources: U.S. Department of Transportation, 2014, Florida Department of Environmental Protection, 2014, and Florida Geographic Data Library, 2014.

W:\Tourism\2014\WA_Bike_Final.mxd

Bicycling Resources

Adventure Cycling Association (www.adventurecycling.org) - National organization promoting bicycling. Maps of national bicycle routes.

Bike Florida (www.bikeflorida.org) - Bicycle Tours.

Capital City Cyclists (www.cccyclists.org) - Promoting bicycling for transportation, sport and health.

Florida Bicycle Association (www.floridabicycle.org) - Advocates and educates for excellence in bicycling in Florida.

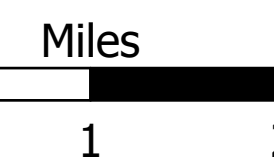
Florida Cycling (www.floridacycling.com) - Bicycle racing events for competitive riders.

Florida's Pedestrian and Bicycling Safety Resource Center (www.pedbikesrc.ce.ufl.edu) - Information on bicycling safety in Florida.

Gainesville Cycling Club (www.gainesvillecyclingclub.org) - An incorporated organization promoting bicycling.

The Old Florida Heritage Highway and its loop/spur roads (www.scenicus441.com) - Showcase the outstanding cultural, historical, archeological, recreational, natural and scenic intrinsic resources along Florida's state highways.

Visit Natural North Florida (www.vnnf.org) - Tourism information for the 10-county Visit Natural North Florida Area.



The North Central Florida Regional Planning Council and the Original Florida Tourism Task Force do not warrant the safety of the facilities on this map for use by bicyclists. A bicyclist should use these facilities only if he or she has the adequate skill level as a bicyclist, and the bicyclist must make that determination. All the roads shown are used by automobiles and trucks, and the bicyclists assume the risks for their own safety when using the roads and/or facilities indicated on this map. The North Central Florida Regional Planning Council, the Original Florida Tourism Task Force and the local governments in which these bicycle facilities are located are not responsible for any damages whatsoever from its use.



Funding provided by the Florida Department of Economic Opportunity.