

The Original Florida Tourism Task Force

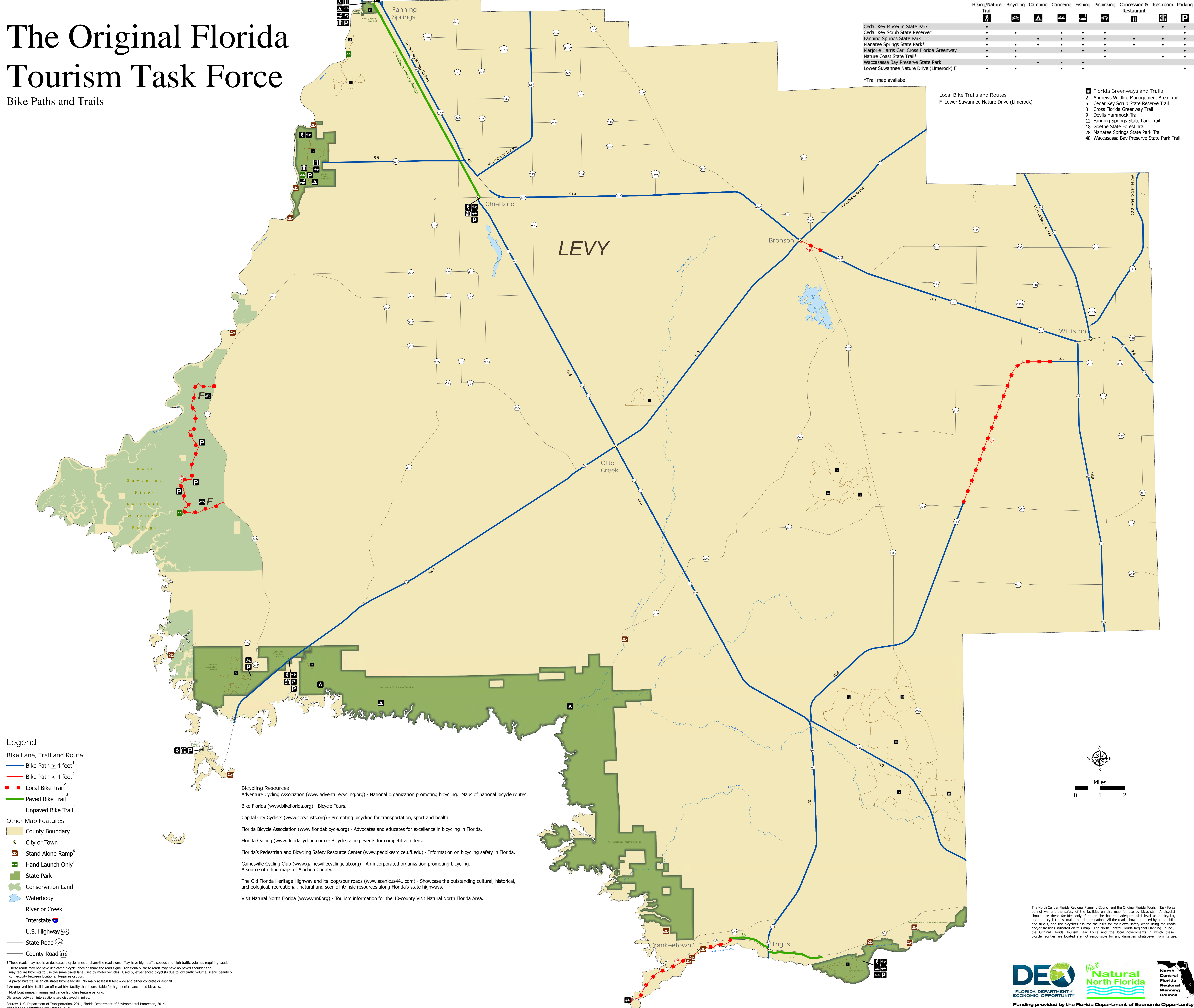
Bike Paths and Trails

	Hiking/Nature Trail	Bicycling	Camping	Canoeing	Fishing	Picnicking	Concession & Restaurant	Restroom	Parking
Cedar Key Museum State Park	•	•	•	•	•	•	•	•	•
Cedar Key Scrub State Reserve*	•	•	•	•	•	•	•	•	•
Fanning Springs State Park	•	•	•	•	•	•	•	•	•
Manatee Springs State Park*	•	•	•	•	•	•	•	•	•
Marjorie Harris Carr Cross Florida Greenway	•	•	•	•	•	•	•	•	•
Nature Coast State Trail*	•	•	•	•	•	•	•	•	•
Waccasassa Bay Preserve State Park	•	•	•	•	•	•	•	•	•
Lower Suwannee Nature Drive (Limerock) F	•	•	•	•	•	•	•	•	•

*Trail map available

Local Bike Trails and Routes
F Lower Suwannee Nature Drive (Limerock)

- 1 Florida Greenways and Trails
- 2 Andrews Wildlife Management Area Trail
- 5 Cedar Key Scrub State Reserve Trail
- 8 Cross Florida Greenway Trail
- 9 Devils Hammock Trail
- 12 Fanning Springs State Park Trail
- 18 Goethe State Forest Trail
- 28 Manatee Springs State Park Trail
- 48 Waccasassa Bay Preserve State Park Trail



- ### Legend
- Bike Lane, Trail and Route**
- Bike Path ≥ 4 feet¹
 - Bike Path < 4 feet²
 - Local Bike Trail²
 - Paved Bike Trail³
 - Unpaved Bike Trail⁴
- Other Map Features**
- County Boundary
 - City or Town
 - Stand Alone Ramp⁵
 - Hand Launch Only⁵
 - State Park
 - Conservation Land
 - Waterbody
 - River or Creek
 - Interstate
 - U.S. Highway
 - State Road
 - County Road

Bicycling Resources

- Adventure Cycling Association (www.adventurecycling.org) - National organization promoting bicycling. Maps of national bicycle routes.
- Bike Florida (www.bikeflorida.org) - Bicycle Tours.
- Capital City Cyclists (www.cccyclists.org) - Promoting bicycling for transportation, sport and health.
- Florida Bicycle Association (www.floridabicycle.org) - Advocates and educates for excellence in bicycling in Florida.
- Florida Cycling (www.floridacycling.com) - Bicycle racing events for competitive riders.
- Florida's Pedestrian and Bicycling Safety Resource Center (www.pedbikesrc.ce.ufl.edu) - Information on bicycling safety in Florida.
- Gainesville Cycling Club (www.gainesvillecyclingclub.org) - An incorporated organization promoting bicycling. A source of riding maps of Alachua County.
- The Old Florida Heritage Highway and its loop/spur roads (www.scenic9411.com) - Showcase the outstanding cultural, historical, archeological, recreational, natural and scenic intrinsic resources along Florida's state highways.
- Visit Natural North Florida (www.vnnf.org) - Tourism information for the 10-county Visit Natural North Florida Area.

¹ These roads may not have dedicated bicycle lanes or share-the-road signs. May have high traffic speeds and high traffic volumes requiring caution.
² These roads may not have dedicated bicycle lanes or share-the-road signs. Additionally, these roads may have no paved shoulder and may require bicyclists to use the same travel lane used by motor vehicles. Used by experienced bicyclists due to low traffic volume, scenic beauty or connectivity between locations. Requires caution.
³ A paved bike trail is an off-street bicycle facility. Normally at least 8 feet wide and either concrete or asphalt.
⁴ An unpaved bike trail is an off-road bike facility that is unsuitable for high performance road bicycles.
⁵ Most boat ramps, marinas and canoe launches feature parking.
 Distances between intersections are displayed in miles.
 Source: U.S. Department of Transportation, 2014; Florida Department of Environmental Protection, 2014, and Florida Geographic Data Library, 2014.
 W:\Tourism\2014\LE_Bike_Final.mxd

The North Central Florida Regional Planning Council and the Original Florida Tourism Task Force do not warrant the safety of the facilities on this map for use by bicyclists. A bicyclist should use these facilities only if he or she has the adequate skill level as a bicyclist, and the bicyclist must make that determination. All the roads shown are used by automobiles and trucks, and the bicyclist assumes the risks for their own safety when using the roads and/or facilities indicated on the map. The North Central Florida Regional Planning Council, the Original Florida Tourism Task Force and the local governments in which these bicycle facilities are located are not responsible for any damages whatsoever from its use.

