

### Weeks Landing - 1.5 miles (one way)

*This trail offers a beautiful view of the Suwannee River.*

This is a shady limerock road with two gravel-lined wet areas near the river.

An upland pine forest changes to floodplain wetlands near the river. Look for the distinctive bark of river birch trees.

The road ends at a small sandy boat ramp with views of Fowlers Bluff. Look for jumping Gulf Sturgeon.



### Middle Loop - 1.5 miles

This grassy road has two places that are gravel-lined but often wet and one soft sandy section. In 1 mile, the ungated road on the right returns to CR 349, the road ahead deadends.



Not too wet, not too dry: the environment this trail traverses is just right for many pines. Look for evidence of former plantings.

### Triangle Loop - 1.5 miles

This curving limerock road has a short gravel section that can be wet.

There is a picturesque, lily-studded pond at the north end of the loop.



The habitat at both ends of the loop is mesic flatwoods with palmetto filling much of the understory. The ecosystem in the middle changes to bottomland hardwood forest.



Leave it cleaner  
than you found it.

**Caution:** Be aware that this is a wildlife refuge and while on this trail, you might encounter alligators or snakes. Ticks are common in tall-grass areas and poison ivy vines grow on many trees along the trail. Stay on the trail, watch where you place your feet and check for ticks when you leave the woods. During hunting seasons, wear brightly colored clothing while on the trail.

**Trail guide-** Charlie Adkins & Carolyn Nobbs, volunteers, Lower Suwannee National Wildlife Refuge. Peg & Russ Hall, Friends of Refuges

**Design-** Debbie Meeks, Friends of Refuges

**Map-** Daniel Barrand, Refuge Forester

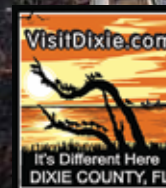
[www.FriendsOfRefuges.org](http://www.FriendsOfRefuges.org)  
© 2016 Friends LSCKNWR

# CR349 Refuge Cycling Tour



**Five Refuge roads, each unique:**

- 14.5 mile one way
- Seven river habitats



**Friends of  
the Lower  
Suwannee & Cedar Keys  
National Wildlife Refuges**





## Yellow Jacket Loop - 1.3 miles

Yellow Jacket follows a sandhill and is a dry scrub habitat that turns to wet flatwoods at the south end. The road has several long sections of soft sugar sand.

Several blueberry relatives are among the pines: sparkleberry, deer berry and shiny blueberry.



A story in sand

## Beaver Dam Road - 2.7 miles



Watch for trailside violets in the spring.

This hard limerock road partly follows a stream. The road was named for beavers who made the stream their home.

However, a beaver has not been sighted for many years.

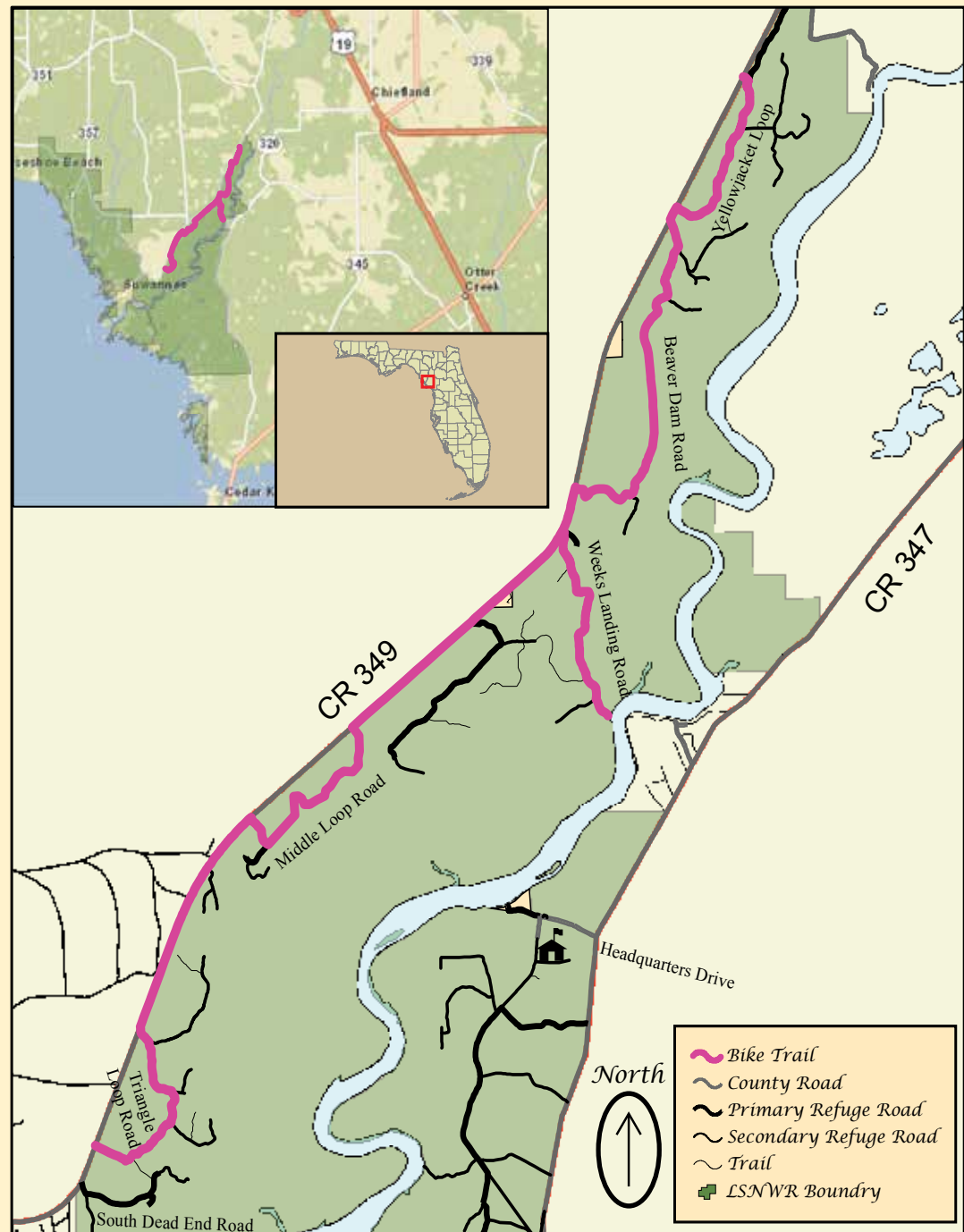
Notice the wood duck nest boxes near roadside ponds. Many types of birds love the bottomland hardwood habitat along this road.

Listen for owl and thrush.



The butterwort is a carnivorous plant that is common in the Refuge.

It is one of the first flowers of spring.



## Lower Suwannee National Wildlife Refuge

9,750 feet  
Map Creator: Daniel L. Barrand  
U. S. Fish and Wildlife Service  
16450 NW 31st Place  
Chiefland, Florida 32626  
Phone: 352-493-0238  
Fax: 352-493-1935



Visit the Friends website,  
[FriendsOfRefuges.org](http://FriendsOfRefuges.org), for more information  
and downloadable GPS file.

